



TURBO-LUX®

Fire pump flowmeter - Wafer version for test lines
in fire protection systems



made
in
Germany

The Turbo-Lux® fire pump flowmeter with VdS approval is the ideal solution for flow measurement in fixed sprinkler systems. Utilize a bypass flowmeter compatible with all installed orifice plates from DN 80 to DN 250, allowing you to freely choose the installation location, orientation and flow direction.

Save time and effort with easy installation and removal. Additionally, the removable filter screen ensures straightforward cleaning.

In addition to its long service life, the Turbo-Lux® offers precise measurements and accurate readings thanks to its high resistance to vibrations.

ADVANTAGES

- » One bypass flowmeter for all orifice plates
- » Horizontal, vertical or any installation orientation possible
- » Easy installation and removal
- » Strong vibration resistance
- » Optionally available with calibration certificate

Together with the optionally available practical transport case for the bypass flowmeter, the products in the Turbo-Lux® series are favored by inspection organizations. The required certification from VdS Schadenverhütung GmbH is included. Since 1977, companies have trusted the VdS-approved technology of the Turbo-Lux® series.



TECHNICAL DATA

System

Measuring principle	Orifice plate as differential pressure generator with variable area bypass flowmeter
Measuring accuracy	±2.5 % of full scale value (VdS)
Certificates	VdS G 4770010

Input

Nominal diameter	DN 80, PN 16
	DN 100, PN 16
	DN 150, PN 16
	DN 200, PN 10/16
	DN 250, PN 10/16
Pressure limits	Max. 12 bar (174 psi)

Application conditions

Temperature	4 °C ... 50 °C (39 ... 122 °F)
Medium	Water

Constructive design

Orifice plate	Aluminium
Differential pressure tube	Brass
Float	Stainless steel
Bypass orifice	Stainless steel
Filter	Stainless steel
Gasket	NBR

DIMENSIONS AND WEIGHTS

Nominal diameter	A (mm / in)	ØD (mm / in)	Packaging dimensions (mm / in)	Weight incl. packaging (kg / lbs)
DN 80, PN 16	130 / 5.1	138 / 5.4	285 x 215 x 57 (11.2 x 8.5 x 2.4)	1.3 / 2.9
DN 100, PN 16	140 / 5.5	158 / 6.2	285 x 215 x 57 (11.2 x 8.5 x 2.4)	1.6 / 3.5
DN 150, PN 16	165 / 6.5	212 / 8.4	285 x 215 x 57 (11.2 x 8.5 x 2.4)	2.1 / 4.6
DN 200, PN 10/16	190 / 7.5	268 / 10.6	385 x 325 x 57 (15.2 x 12.8 x 2.4)	3.0 / 6.6
DN 250, PN 10/16	215 / 8.5	320 / 12.6	385 x 325 x 57 (15.2 x 12.8 x 2.4)	4.0 / 8.8
Bypass flowmeter	-	-	220 x 160 x 110 (8.7 x 6.3 x 4.3)	0.9 / 2.0

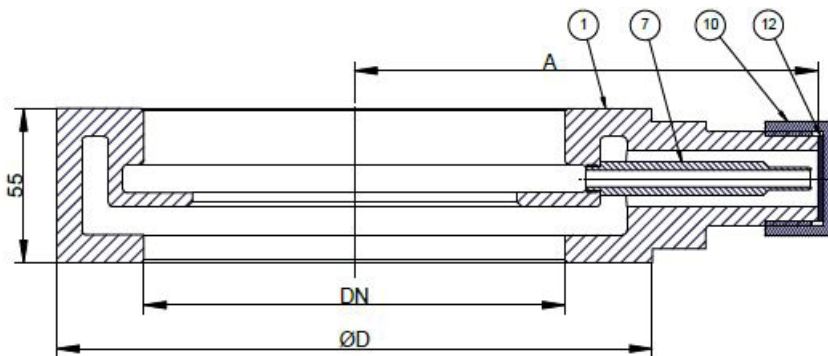


Fig. 1: Position drawing orifice plate

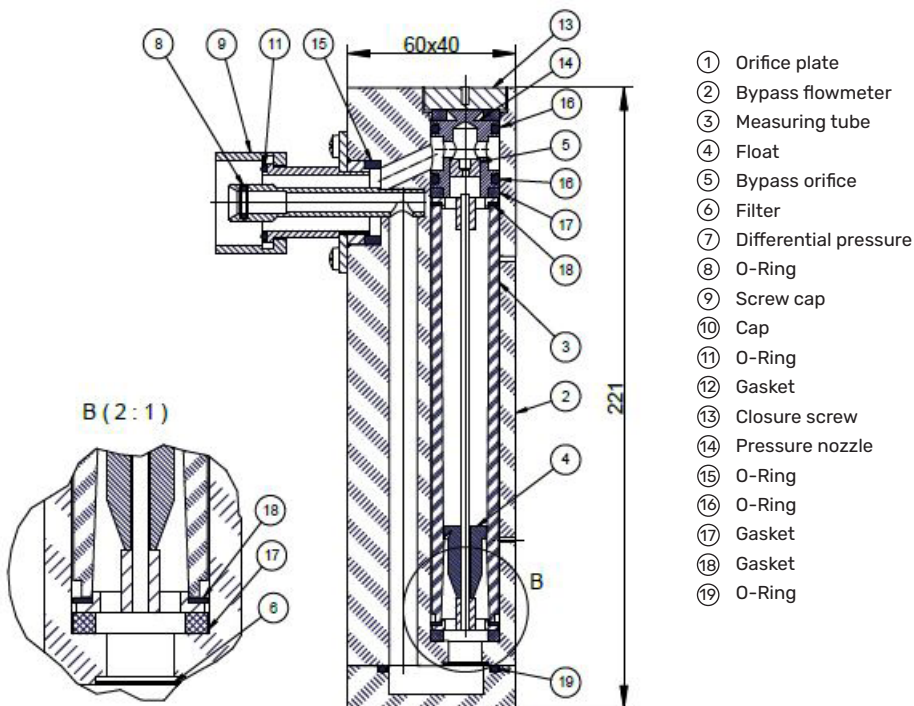


Fig. 2: Position drawing bypass orifice

PRODUCT AND ACCESSORIES

Order code	Description
7ME5830-0AB00-0AA0	Bypass flowmeter Turbo-Lux®
7ME5830-0AB00-1AA0	Bypass flowmeter Turbo-Lux® with accuracy certificate
7ME5830-Adapter-M30-G1	Adapter M30 x 1.5 to G1 ¹
7ME5834-0AA10-0AA0	Turbo-Lux® transport case
7ME5834-0AA01-0AA0	Replacement cap incl. gasket

¹For connecting a Turbo-Lux® bypass flowmeter to a grooved Turbo-Lux® 3 orifice plate

ORIFICE PLATES AND ACCESSORIES

Order code	Description	Connection / Measurement range
7ME5834-1AA00-0AA0	Orifice plate ²	DN 80, PN 16 Qv: 0.42 - 2.1 m ³ /min
7ME5834-2AA00-0AA0	Orifice plate ²	DN 100, PN 16 Qv: 0.6 - 3.0 m ³ /min
7ME5834-3AA00-0AA0	Orifice plate ²	DN 150, PN 16 Qv: 1.2 - 6.0 m ³ /min
7ME5834-4AA00-0AA0	Orifice plate ²	DN 200, PN 10/16 Qv: 2.4 - 12.0 m ³ /min
7ME5834-5AA00-0AA0	Orifice plate ²	DN 250, PN 10/16 Qv: 3.6 - 18.0 m ³ /min
7ME5834-0BA00-0AA0	Centering kit orifice plate ²	DN 80, PN 16
7ME5834-0CA00-0AA0	Centering kit orifice plate ²	DN 100, PN 16
7ME5834-0EA00-0AA0	Centering kit orifice plate ²	DN 150, PN 16
7ME5834-0FA00-0AA0	Centering kit orifice plate ²	DN 200, PN 10
7ME5834-0KA00-0AA0	Centering kit orifice plate ²	DN 200, PN 16
7ME5834-0GA00-0AA0	Centering kit orifice plate ²	DN 250, PN 10/16

²For installation between flanges

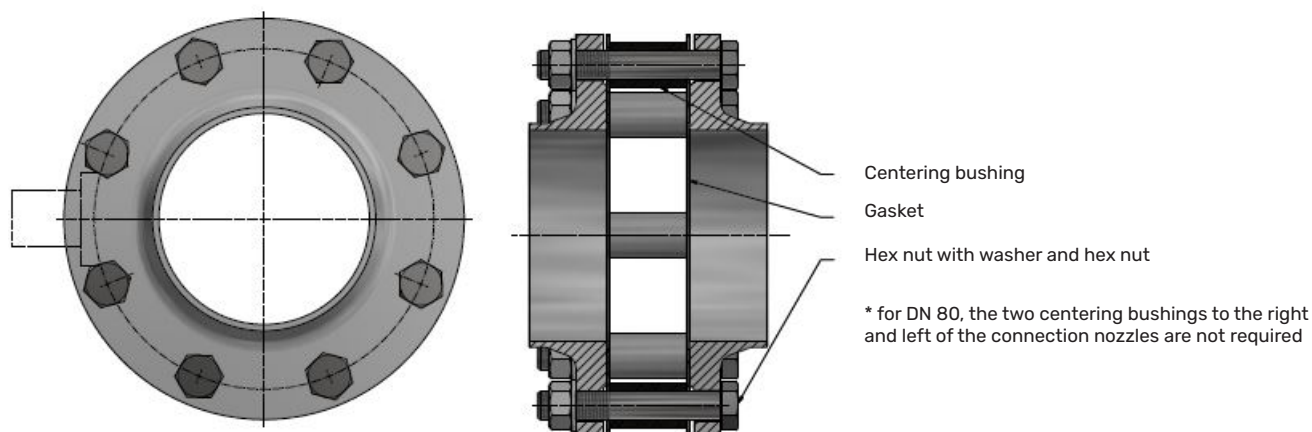


Fig. 3: Centering kit for wafer version