



ZONE-LUX® FLOW SWITCH TESTER

Automated flow switch tester for the use in test lines of fire protection systems



Test the flow switches of your sprinkler system quickly, safely, and with minimal effort – with the FM and VdS approved Zone-Lux®. Meet your legally required quarterly inspection in just a few minutes by only one person and without time-consuming manual testing.

Once activated, the integrated pump generates a flow circuit that simulates the opening of a sprinkler. The flow switch is triggered and the activation is immediately displayed at the fire alarm control panel. It allows a fast and reliable verification of all flow switches in your fire protection system.

ADVANTAGES

- » Cost-effective flow switch testing
- » Easily fulfill your inspection obligations
- » Reduced corrosion risk by avoiding additional water supply
- » Minimized risk of errors through pre-wiring
- » Including test certificate

The compact design enables automatic remote testing without additional water consumption. This saves resources while also reducing the risk of corrosion in your sprinkler piping.

With its built-in resistor monitoring, the Zone-Lux® also detects short circuits and broken wires, giving your monitoring system extra protection and safety.

Rely on Zone-Lux® to save time, reduce effort, and increase the safety of your fire protection system with reliable technology.



TECHNICAL DATA

System

Operating pressure	Max. 16 bar (232 psi)
Temperature range	4 °C ... 50 °C (39 °F ... 122 °F)
Certificates	FM PR464050 VdS G 422034

Main pipe

Installation length	450 mm (17.7 in)
Connection	Grooved
Nominal diameter	2"/DN 50 ... 8"/DN 200

Pump

Pressure limit	16 bar (232 psi)
Protection class	IP42
Input voltage (nominal)	220 ... 240 V AC (optional 120 V AC)
Frequency range AC	50 ... 60 Hz
Power (max.)	245 W
Flow rate (max.)	115 l/min (30.4 USgpm)
Connection	1 ½"
Weight	5 kg (11 lbs)
Lift height (max.)	8 m (26.3 ft)

Flow switch

Type	Potter VSR-EU (optional VSR-F)
Protection class	IP54
Flow sensitivity	30 ... 57 l/min (7.9 ... 15.1 USgpm)
Pressure loss	2"/DN 50 ... 4"/DN 100: ≤0.2 bar at 5 m/s (2.9 psi at 16.4 ft/s) 6"/DN 150 ... 8"/DN 200: ≤0.07 bar at 5 m/s (1.0 psi at 16.4 ft)
Contact ratings	Two SPDT devices (Form C) 10.0 A at 125/250 V AC 2.0 A at 30 V DC resistive 10 mA at 24 V DC

DIMENSIONS AND WEIGHTS

Nominal diameter	Ø (mm / in)	A (mm / in)	B (mm / in)	C (mm / in)	D (mm / in)	Weight (kg / lbs)
2"/DN 50	60.3 (2.4)	245 (9.8)	52 (2.1)	145 (5.7)	116 (4.6)	9.75 (21.5)
2½"/DN 65	76.1 (3.0)	258 (10.2)	60 (2.4)	155 (6.1)	124 (4.9)	9.95 (21.9)
3"/DN 80	88.9 (3.5)	259 (10.2)	71 (2.8)	165 (6.5)	130 (5.1)	10.95 (24.1)
4"/DN 100	114.3 (4.5)	272 (10.7)	84 (3.3)	170 (6.7)	140 (5.5)	11.65 (25.7)
5"/DN 125	139.7 (5.5)	285 (11.2)	97 (3.8)	185 (7.3)	155 (6.1)	
6"/DN 150	168.3 (6.6)	299 (11.8)	111 (4.4)	200 (7.8)	168 (6.6)	15.00 (33.1)
8"/DN 200	219.1 (8.6)	325 (12.8)	137 (5.4)	235 (9.3)	195 (7.7)	22.55 (49.7)

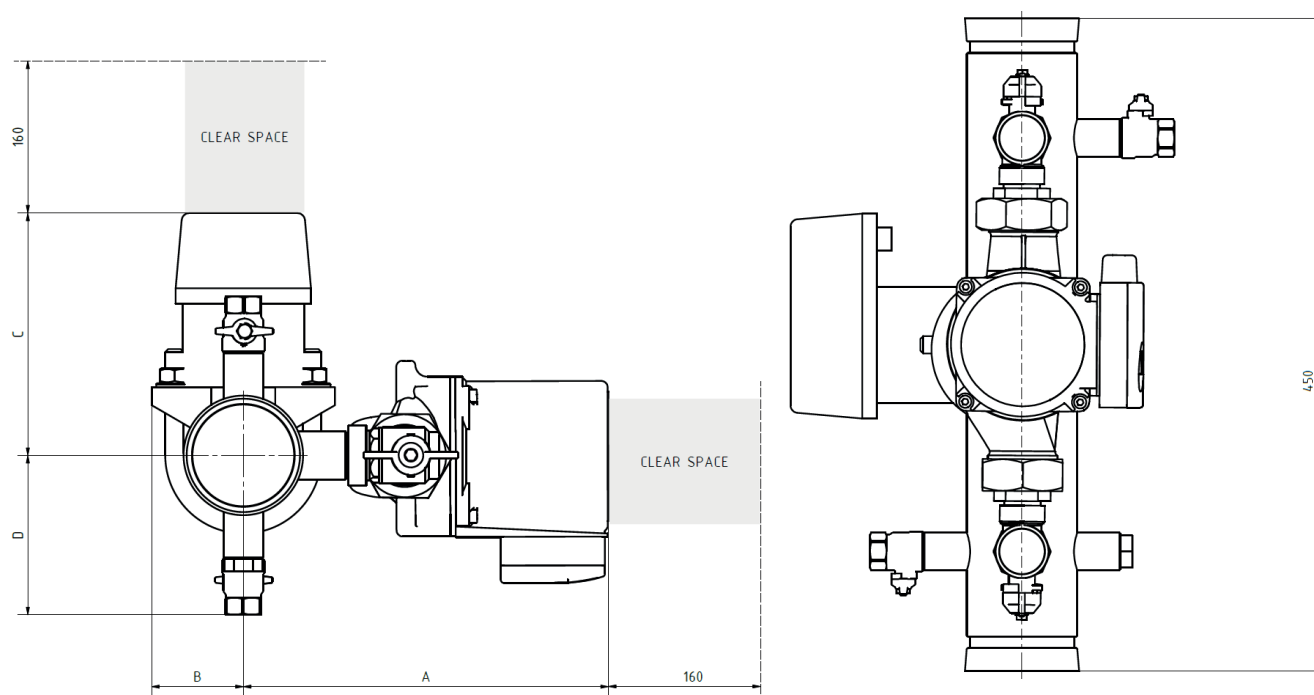


Fig. 1: Zone-Lux® Dimensions (mm)

ORIENTATION

The Zone-Lux® can be installed in either a horizontal or vertical orientation. The flow direction arrow on the main pipe of the Zone-Lux® must align with the flow direction of the sprinkler system.

Horizontal mounting

In horizontal orientation, the flow switch must face upwards. It must not be installed sideways or below the pipe.



Fig. 2: Zone-Lux® correct orientation

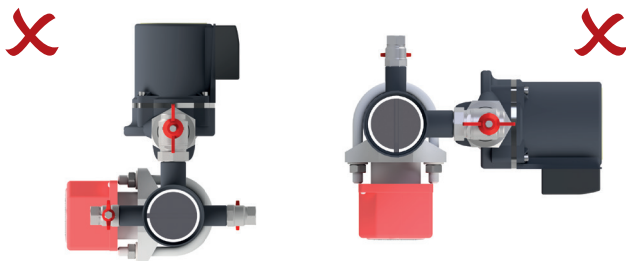


Fig. 3: Zone-Lux® wrong orientation

Vertical mounting

With left-hand and right-hand model variants, the Zone-Lux® can also be installed in tight spaces along walls.

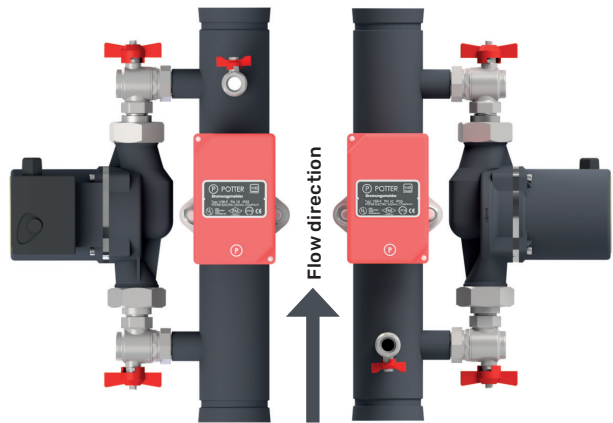


Fig. 4: Zone-Lux® possible vertical orientation: Pump in flow direction left

Fig. 5: Zone-Lux® possible vertical orientation: Pump in flow direction right



ZONE-LUX® VARIANTS*

Nominal diameter	Pump flow direction	Order code	Nominal diameter	Pump flow direction	Order code
2"/DN 50 (Ø 60.3 mm / 2.4 in)	Left	ZLB1-EL	5"/DN 125 (Ø 139.7 mm / 5.5 in)	Left	-
	Right	ZLB1-ER		Right	-
2½"/DN 65 (Ø 76.1 mm / 2.9 in)	Left	ZLB1-FL	6"/DN 150 (Ø 168.3 mm / 6.6 in)	Left	ZLB1-KL
	Right	ZLB1-FR		Right	ZLB1-KR
2½"/DN 65 (Ø 73.0 mm / 3.0 in)	Left	ZLB1-UL	6"/DN 150 (Ø 165.1 mm / 6.5 in)	Left	ZLB1-XL
	Right	ZLB1-UR		Right	ZLB1-XR
3"/DN 80 (Ø 88.9 mm / 3.5 in)	Left	ZLB1-GL	8"/DN 200 (Ø 219.1 mm / 8.6 in)	Left	ZLB1-LL
	Right	ZLB1-GR		Right	ZLB1-LR
4"/DN 100 (Ø 114.3 mm / 4.5 in)	Left	ZLB1-HL			
	Right	ZLB1-HR			

*Available in Base, Apollo and Direct Connection configurations

ACCESSORIES AND REPLACEMENT PARTS

Product	Order code
Apollo module addressable (with pipe mounting kit)	ZB-ZLA0
Apollo module addressable pre-wired (mounted on pipe)	ZB-ZLA0-P
Direct control (junction box with pipe mounting kit)	ZB-ZLD0
Direct control pre-wired (junction box mounted on pipe)	ZB-ZLD0-P
Key switch for direct control	ZB-ZLK0
Key switch for direct control Single	ZB-ZLKV0
Key switch for direct control Group	ZB-ZLKG0
Replacement pump	ET-ZL-001